

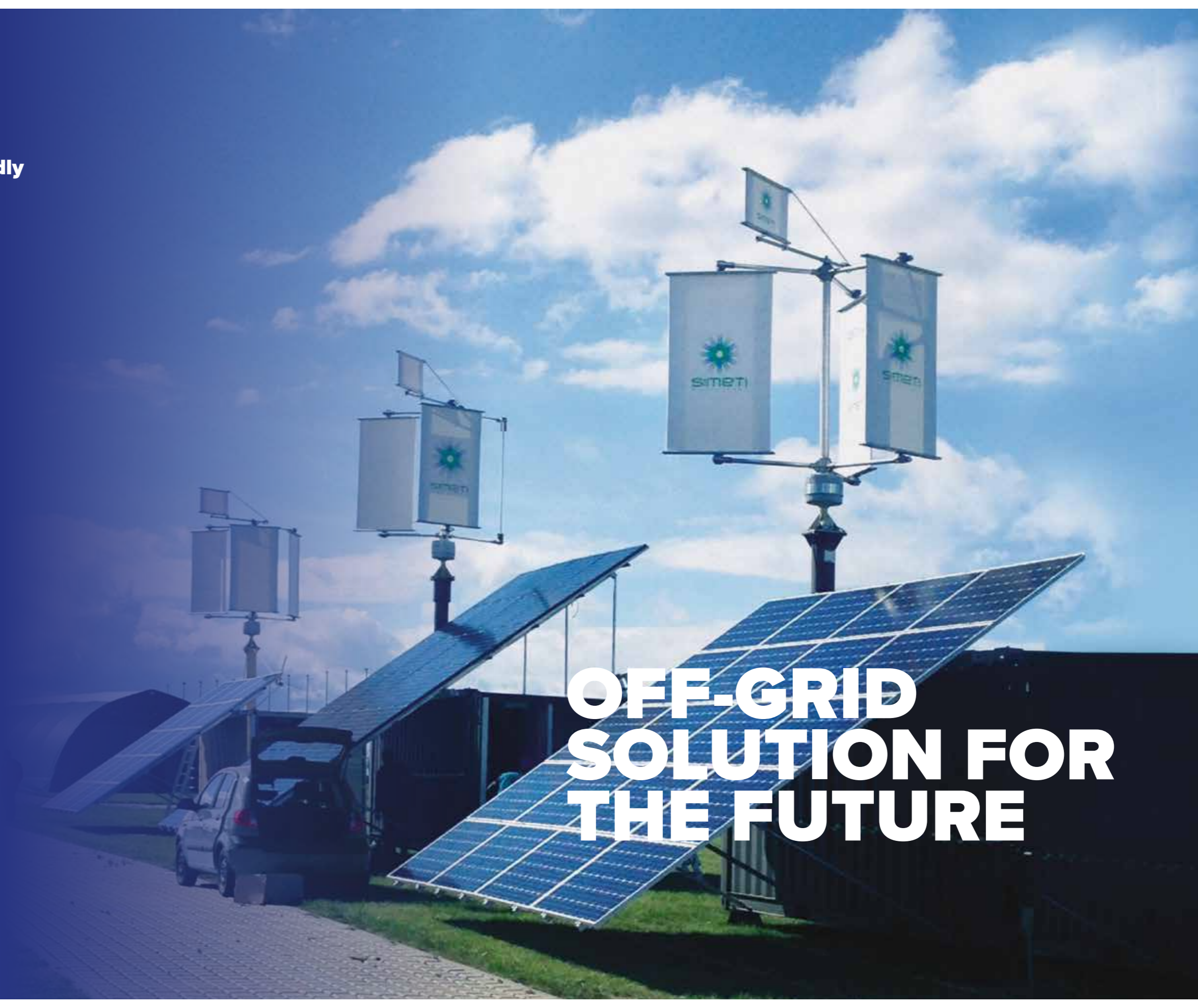
BENEFITS

- **Easy to install**
- **Easy to Use**
- **Easy to Maintain**
- **Enviromental Friendly**

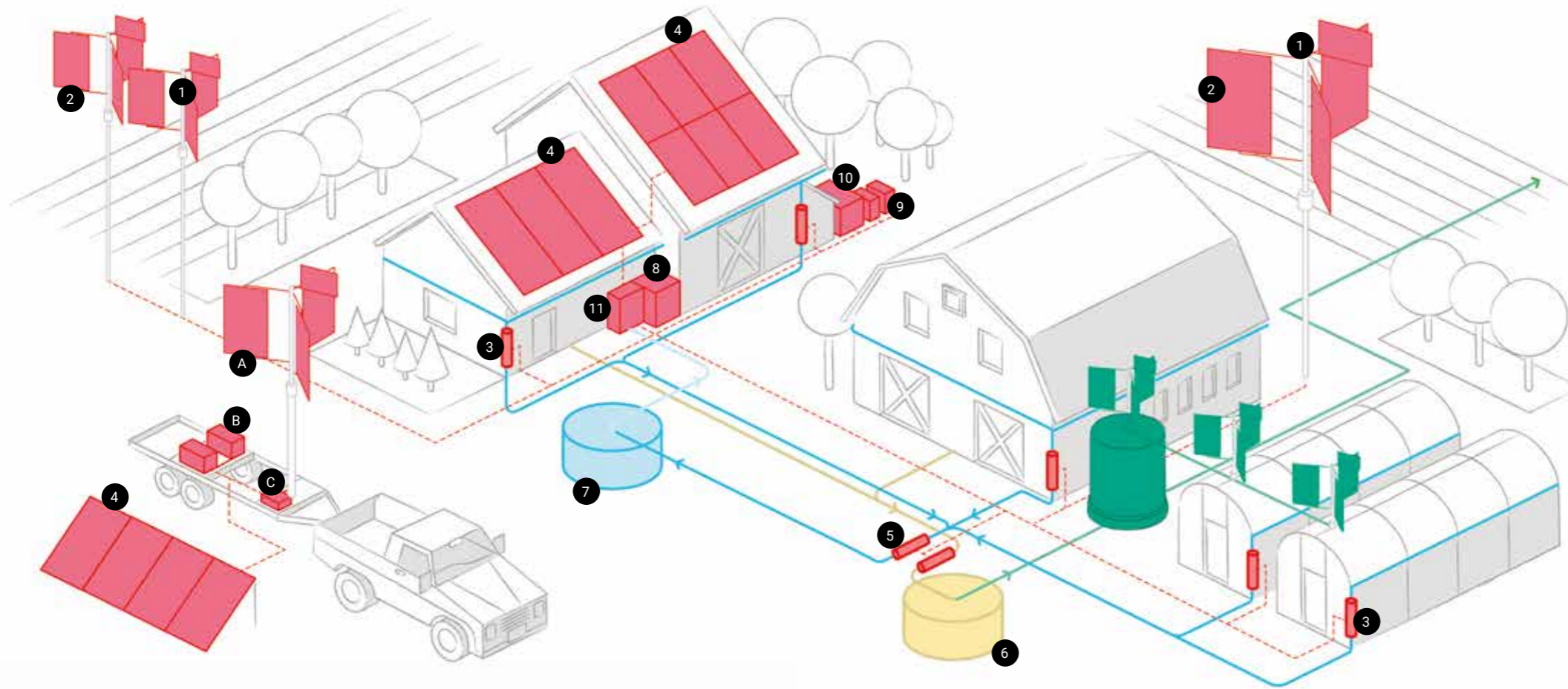


Simeti Group Ltd.
85 Great Portland Street,
London, W1W 7LT
United Kingdom
simeti.co.uk

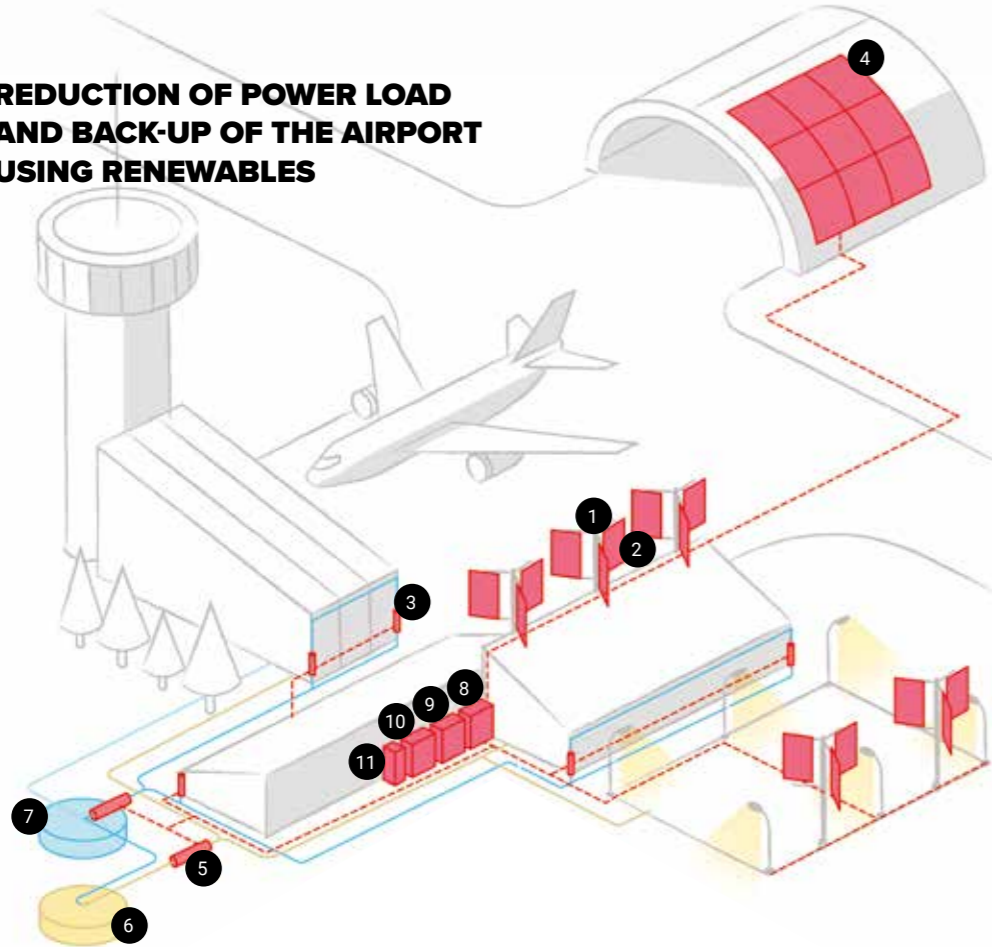
**OFF-GRID
SOLUTION FOR
THE FUTURE**



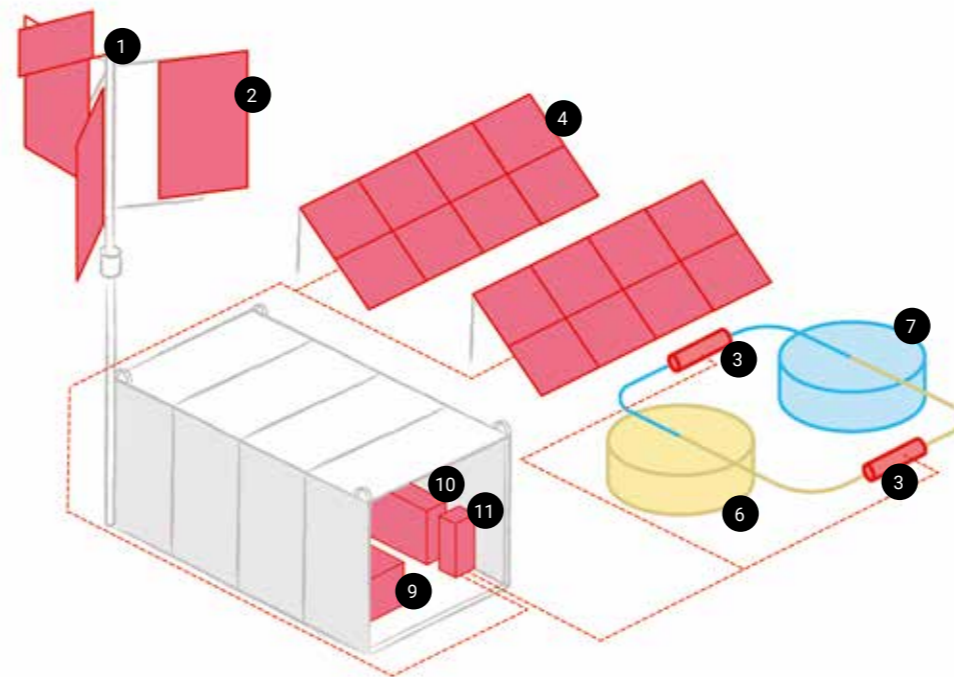
POWER INDEPENDENT AGRICULTURAL FARM USING RENEWABLES



REDUCTION OF POWER LOAD AND BACK-UP OF THE AIRPORT USING RENEWABLES



INTEGRATION OF GREEN POWER SOURCES (PV PANELS AND SMALL WIND TURBINE)



Integration of Renewables

List of Technologies

- 1 Wind Turbines Simeti installed on the building roofs**
Boiling water, direct consumption, charging of LENR Cells, 5 - 10kWp
- 2 PV folios on wind turbine blades**
Charging LENR Cells, 700 Wp
- 3 Water Turbine in Eaves**
Charging LENR Cells, streaming rain water into water treatment, 300 Wp
- 4 PV panels on the roofs**
Charging of LENR cells, direct consumption, 5 - 10 kWp
- 5 Water Turbines in Sewerage Pipelines**
Charging LENR Cells, 10 kWp – 30 kWp
- 6 Cleaning of Waste Water - Recycling Water**
- 7 Water Treatment - Increase of quality of water**
- 8 Security system - Checking Water Quality and Contamination**
- 9 LENR Cells (Battery Storage)**
Power Storage, charging of external and portable devices, 10 - 50kWh
- 10 Back up generator**
Back up of the whole system, 15 - 20 kWp
- 11 Central Electronic Management System**

Portable Facility on the Trailer

- A Wind Turbine + PV panels and folios**
- B Back-up generator (petrol or diesel)**
- C LENR Cells - direct consumption, charging LENR Cells – 20 kWp**

